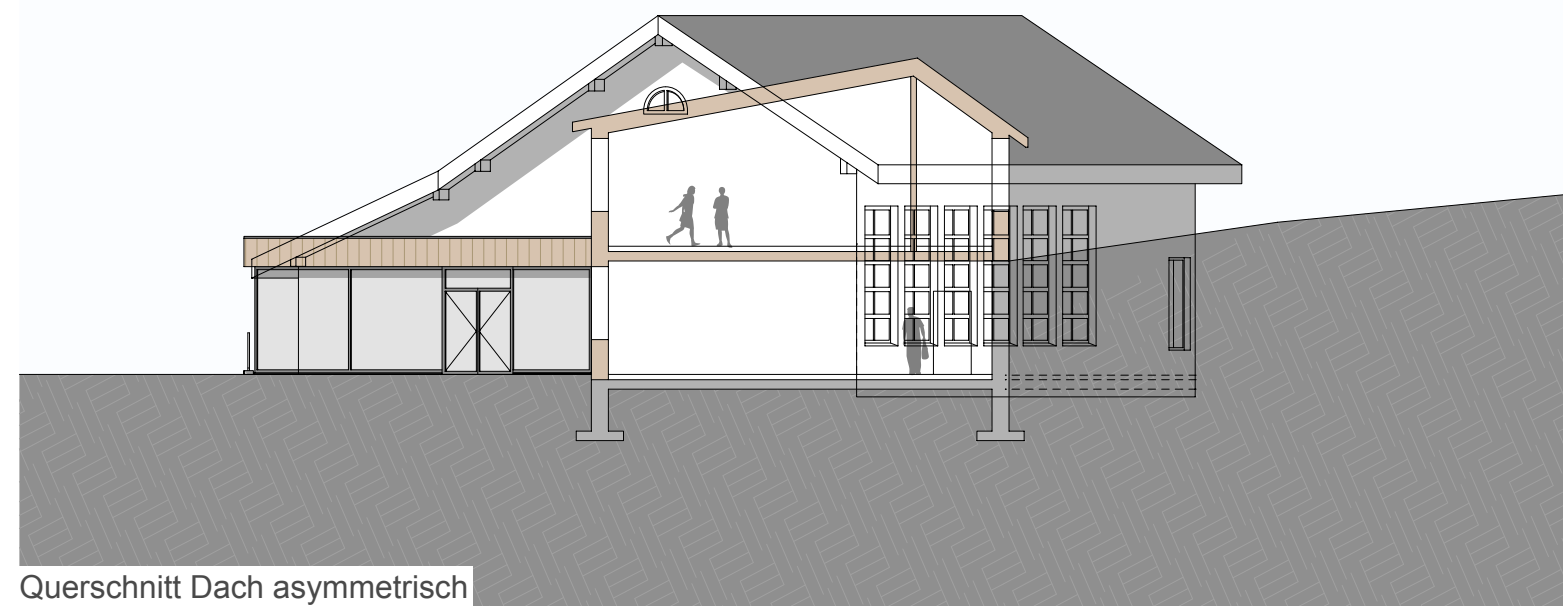
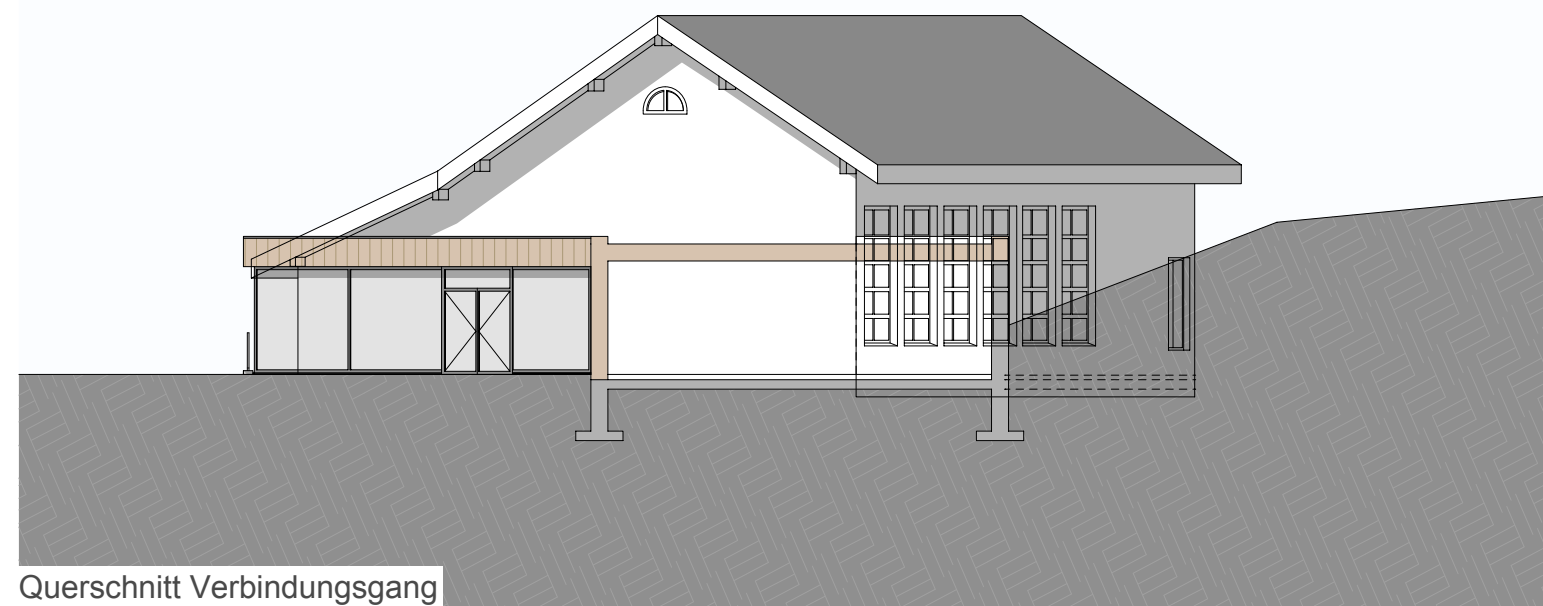


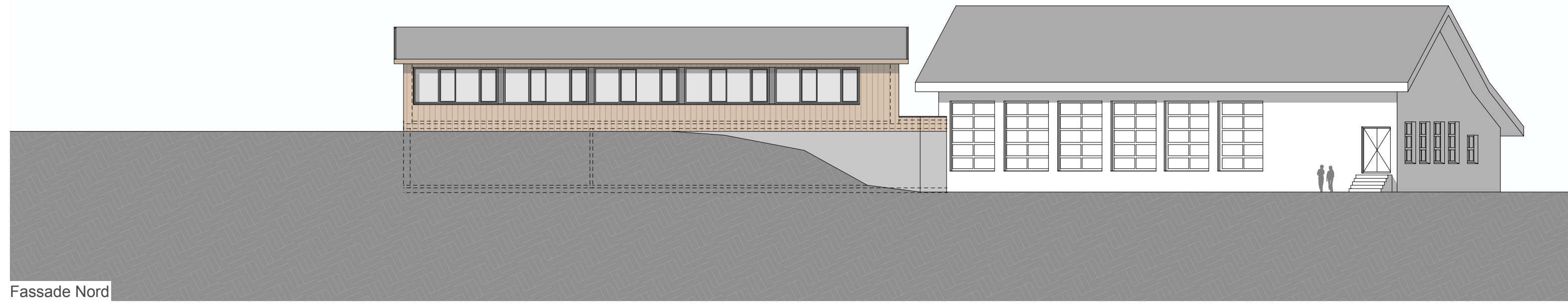
Querschnitt Dach symmetrisch



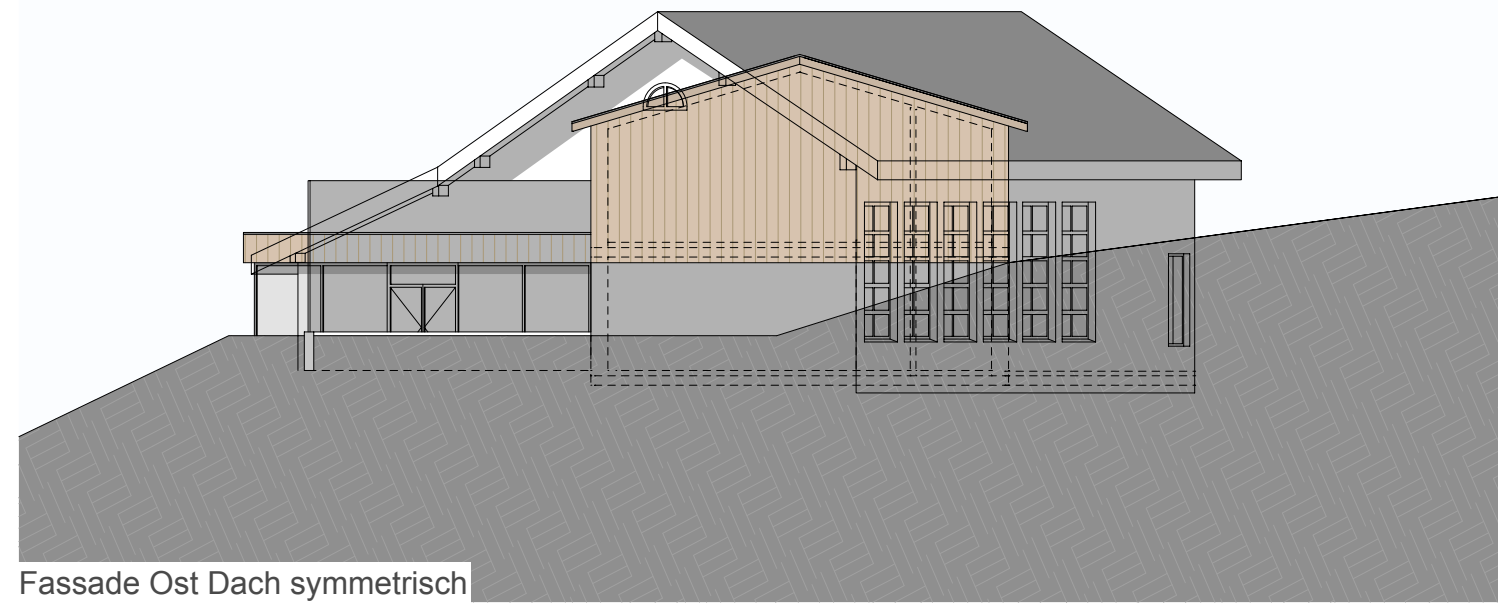
Querschnitt Dach asymmetrisch



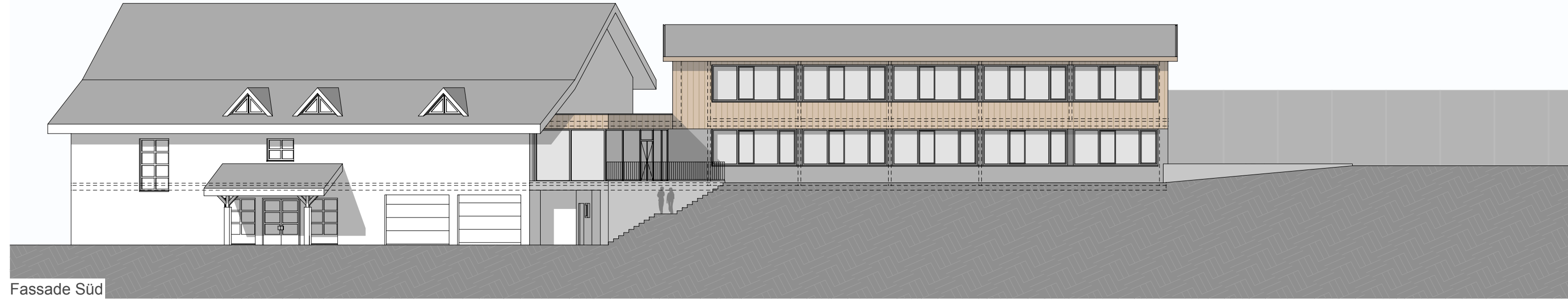
Querschnitt Verbindungsgang



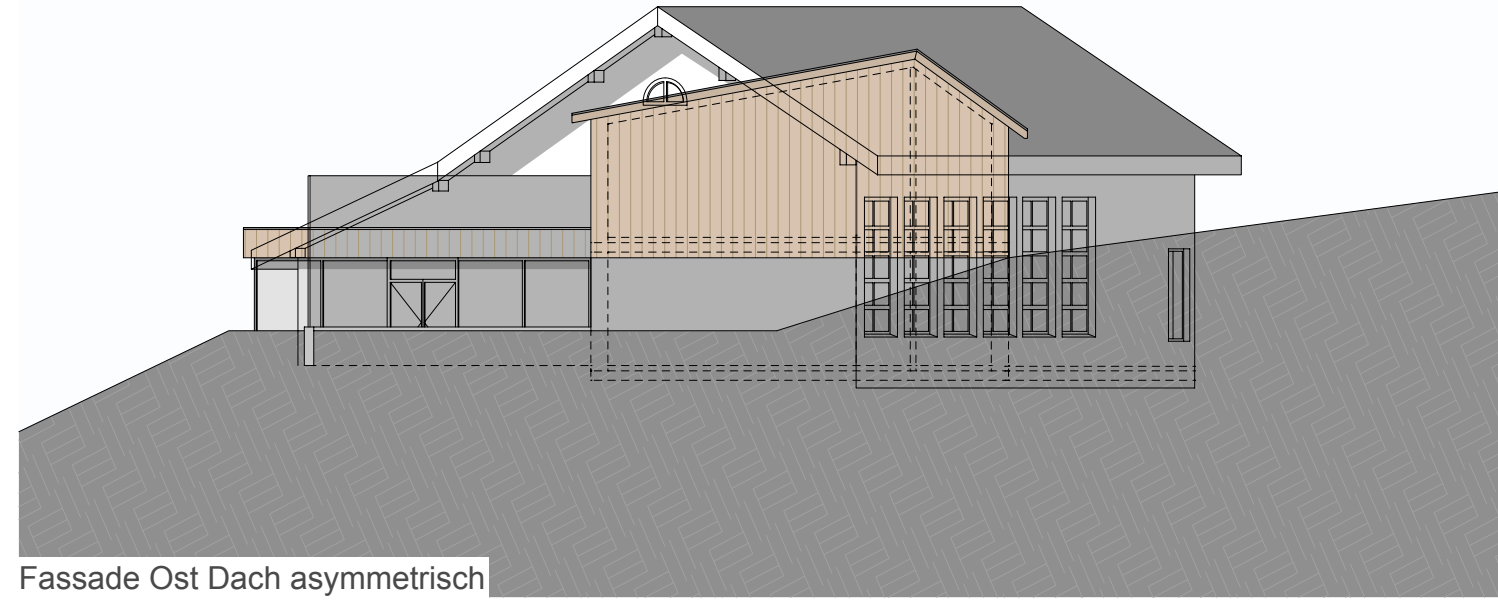
Fassade Nord



Fassade Ost Dach symmetrisch



Fassade Süd



Fassade Ost Dach asymmetrisch

Erweiterung Schulhaus Libingen  
Gemeinde Mosnang

**Projektplan**  
**Fassaden & Schnitte Variante 1**

1:200

PlanNr. 18211-611 Datum 06.09.2018 pfa

Format 84 | 30

Plotdatum 29.10.2018

Ebnaterstrasse 143, CH-9630 Wattwil  
Projektleitung: Projektleiter  
f.schaellibaum@schaellibaum.ch  
Tel. +41 71 987 60 45  
www.schaellibaum.ch